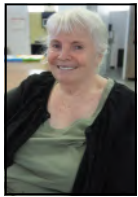


## Meet the happy executive committee

*An inspiring story about a group of friends who took up the challenge to keep the Inala Gallery open and gather the local communities to participate in various art projects.*



**Anne-Marie McPhee, President.** Previously a nurse, Anne-Marie had always dreamed of painting. In 2014, she joined a course at the Gallery and has been painting landscapes, ever since. She met most of her committee friends there and became involved in another painting group: "The Chapel Gardens Art Group" with them. In 2018, they all heard that the Gallery was about to close so they took it over. She's now happy as it is neater and attracts artists from local schools to different sections of the community. "I'd love to see the Gallery have exhibitions all the time." Anne-Marie said. She'd like to display other painters and community groups and see more teaching workshops. Her generosity is shown through her dedication to improve the Inala Gallery and serve the community.



**Judith Hooper, Vice President.** In 2011, after being a nurse, Judith started painting landscapes. A member of her painting group Lindsey Farrel, curator of the Inala Gallery, gave her vision of what the Gallery could be. Her painting friends motivated her to become involved. Her wish is now to see the Gallery be more multiculturally vibrant and witness everybody learn to appreciate art. "The Gallery enables people of various skills to display their art... I think it would give people the impetus that they can achieve." She hopes that the Gallery will involve more multimedia in the future, so that different forms of art like: pottery...would develop. "Art can be sometimes frustrating, but it's overall quite relaxing!" Judith's positivity always makes the sun shine at the Gallery!



**Jocelyn Elizabeth Clarkson, Treasurer.** It was after her stockbroker Clerk's career, that Jocelyn started painting landscapes, at "The Chapel Gardens Art Group" in 2018. She decided to become a committee member to help one of her friends out. "I hope that people could see that art is not only about painting a beautiful picture, but that it's also about being creative, drawing on your imagination, finding skills that you didn't think you had and that could take you ahead.", she said. She'd like to see people learning from each other. She feels that being at the Inala Gallery is being part of a big family. She hopes that local people will find joy by practicing different forms of art and that they will be inspired. Jocelyn's focus and mathematical mind are of an invaluable help at the Gallery!



**Rowena Solomon, Secretary.** Previously a counsellor, Rowena started painting landscapes in 2009 and continued with flowers and animals. Rowena was the secretary of the Gallery before, but left as she felt that no development was happening. Now surrounded by friends from other artists' communities such as the "Chapel Gardens Artists Group" that she herself started, she hopes that there will always be exhibitions on display and more involvement from the community. "I find art very therapeutic." Rowena said. A few years back, she wrote to many doctors of the mental health sector to try having their patients collaborate with the gallery without success. She wishes that Art could help more people towards overcoming their life challenges. Rowena's willpower is a strong asset to the Gallery!

## This year's recent events...



Photo by M. Ming

**Jan-Apr 2019: The Chapel Gardens Artists Exhibition.** A wonderful and peaceful Art display from a group of retired painters and pastelists. A fantastic set of cards made by our Secretary Rowena Solomon.

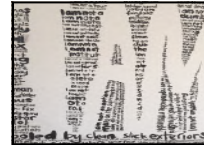


Photo by A.M. McPhee

**Apr-Jun 2019: "I am" Exhibition.** A great panel of artists were invited to exhibit their art work by our new curator Dr. Lindsay Farrell. The "I am" painting (left) has been created by insightful artist Andrew Bardsley.



Photo by M. Ming

**Jun 2019: BBQ Designs Exhibition.** The QUT Industrial Design students were invited at the Gallery to share their winning Designs Project by Councillor C. Strunk, Patron of the Inala Art Gallery.



Photo by M. Ming

**Jul 2019: Helen Ridgway Exhibition "Softly - Something for Everyone".** A beautiful painting & wood carving exhibition made by the Thursday class' local artists. "Reflection" (left) is a masterpiece by Ellen Simpson, a very talented student of Helen's class.



Photo by A.M. McPhee

**Jul 2019: A 2-day exhibition of art from the "Iraqi Unity Association of Queensland".** We were very pleased to welcome this stunning Exhibition from the "Iraqi Unity Association of Queensland".



Photo by P. Ridley

**Jul 2019: Workshop led by M. Ridley, Visual artist.** Mandy taught some of the Gallery students how to find patterns and manipulate them to create mosaics and designs. A banner was made and exhibited during the August Biota St Festival, in Inala.

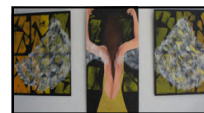


Photo by N. Gnana

**Aug 2019: Glenala State High School Exhibition.** Natasha Milavanovic, Senior Visual Artist, shared with us the work of her students. The adjacent painting named "Broken Angel" is an art piece of Jennifer Ngo, a year 12 student of Glenala High School, Inala.

*If you would like to hold your own exhibition at the Inala Art Gallery, don't hesitate to contact us!*